



# Development of Automation in Invoice Matching

Frank Bloemberg | Senior Controller | Pathé Theaters B.V.

07. Oktober 2021 | SANAA



# Agenda

- What is Pathé
- Pathé and Onventis
- Invoice matching Project







# **PATHÉ HAS OVER 125 YEARS OF HISTORY IN THE WORLD OF CINEMA**

“Experience the wonderful world of films with as many people as possible”: that's how the four Pathé brothers described their ambition in 1896.

In those early years of cinematography, the brothers pioneered both producing films and developing equipment for them.

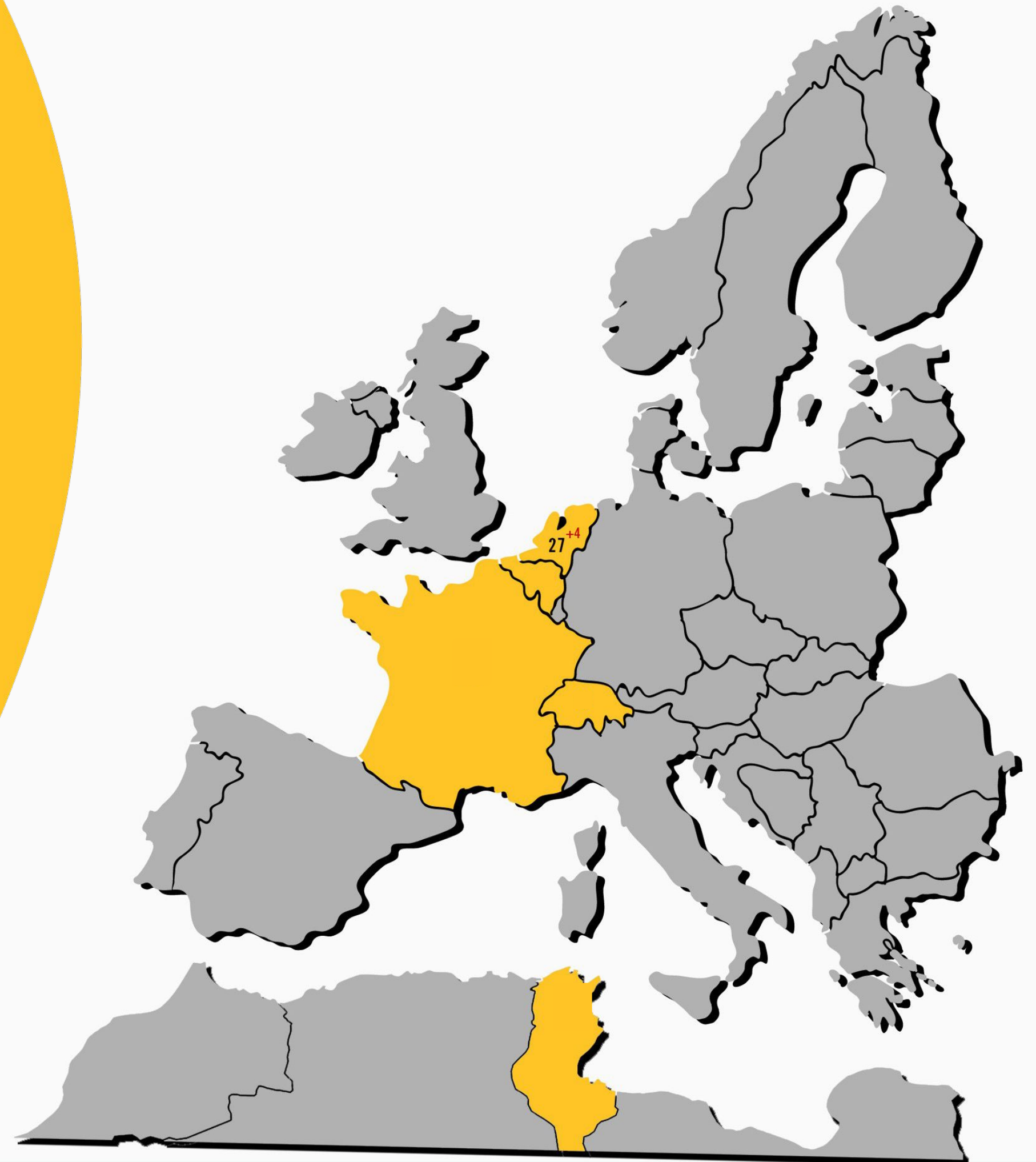
And with success: within a few years Pathé had grown into the largest producer of film equipment and films in the world.





# PATHÉ GROUP in 2021

- Origin in France in 1896 by the brothers Pathé
- Headoffice Les Cinémas Gaumont Pathé located in Paris
- *Presence of Pathé cinema's in:*
  - France 79 theaters
  - Netherlands 31 theaters (November 2021)
  - Belgium 8 theaters
  - Switzerland 8 theaters
  - Tunisia 2 theaters
- French film production company





# FACTS & FIGURES

- Pathé since 1995 present in the Netherlands
- 20 cities
- 31 Pathé theaters
- 254 auditoriums + 1 rooftop
- Exclusivity on premium formats:  
Imax, 4DX, Dolby Cinema and ScreenX
- 15,8 Million visitors in 2019
- 1500 employees
- Over 400.000 screenings
- 695.000 kilo popcorn sold



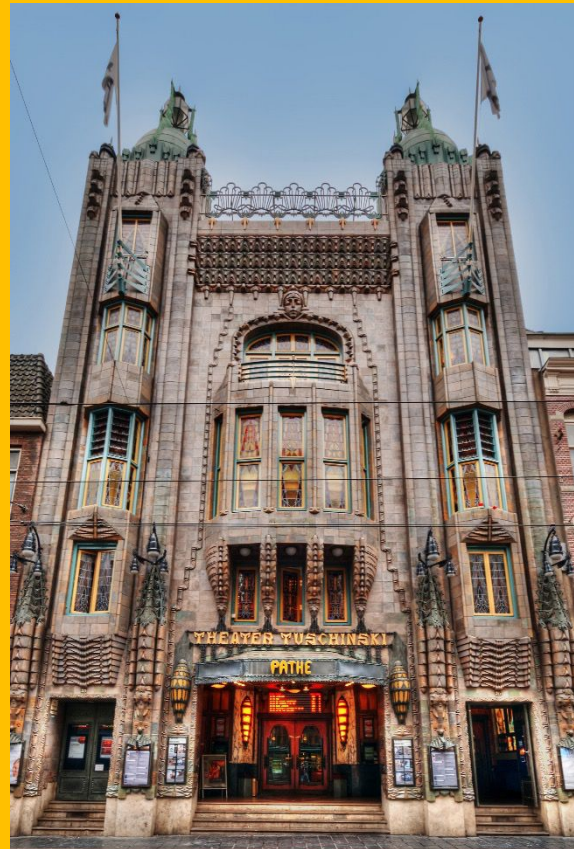
# CREATING CINEMA MEMORIES TOGETHER



# PATHÉ TUSCHINSKI, AMSTERDAM

**The most beautiful cinema in the world**

(TimeOut magazine, February 2021)



Opening on 28  
October 1921



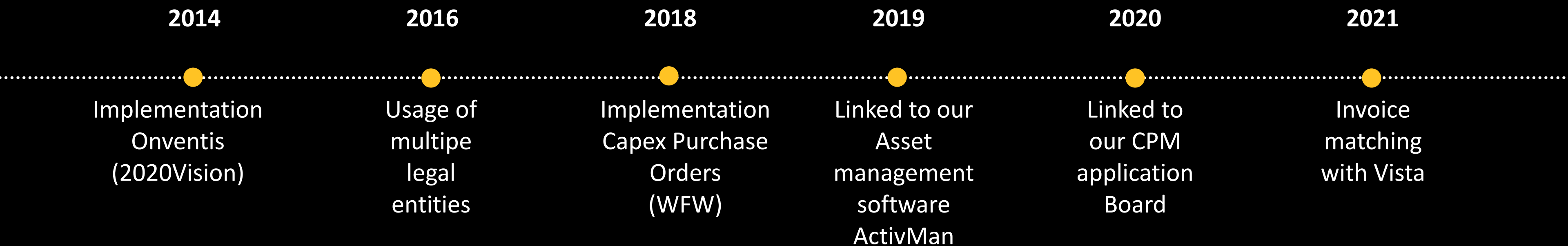


# Onventis at Pathé

*Overview developments since the implementation in 2014 until today*

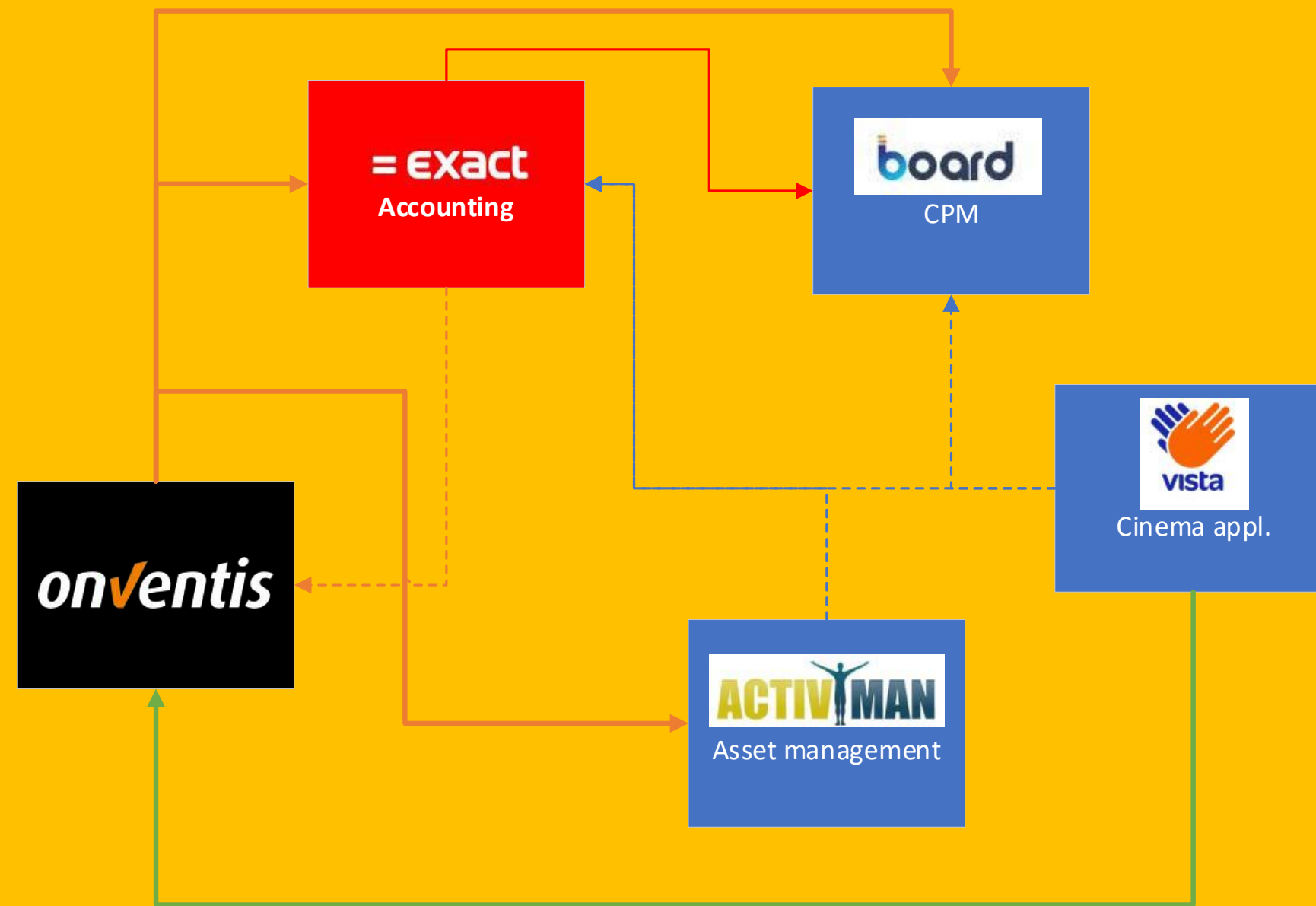


# Timeline





# (relevant) Application landscape





# Invoice matching

*Project related to the  
automated invoice matching for  
film hire invoices*

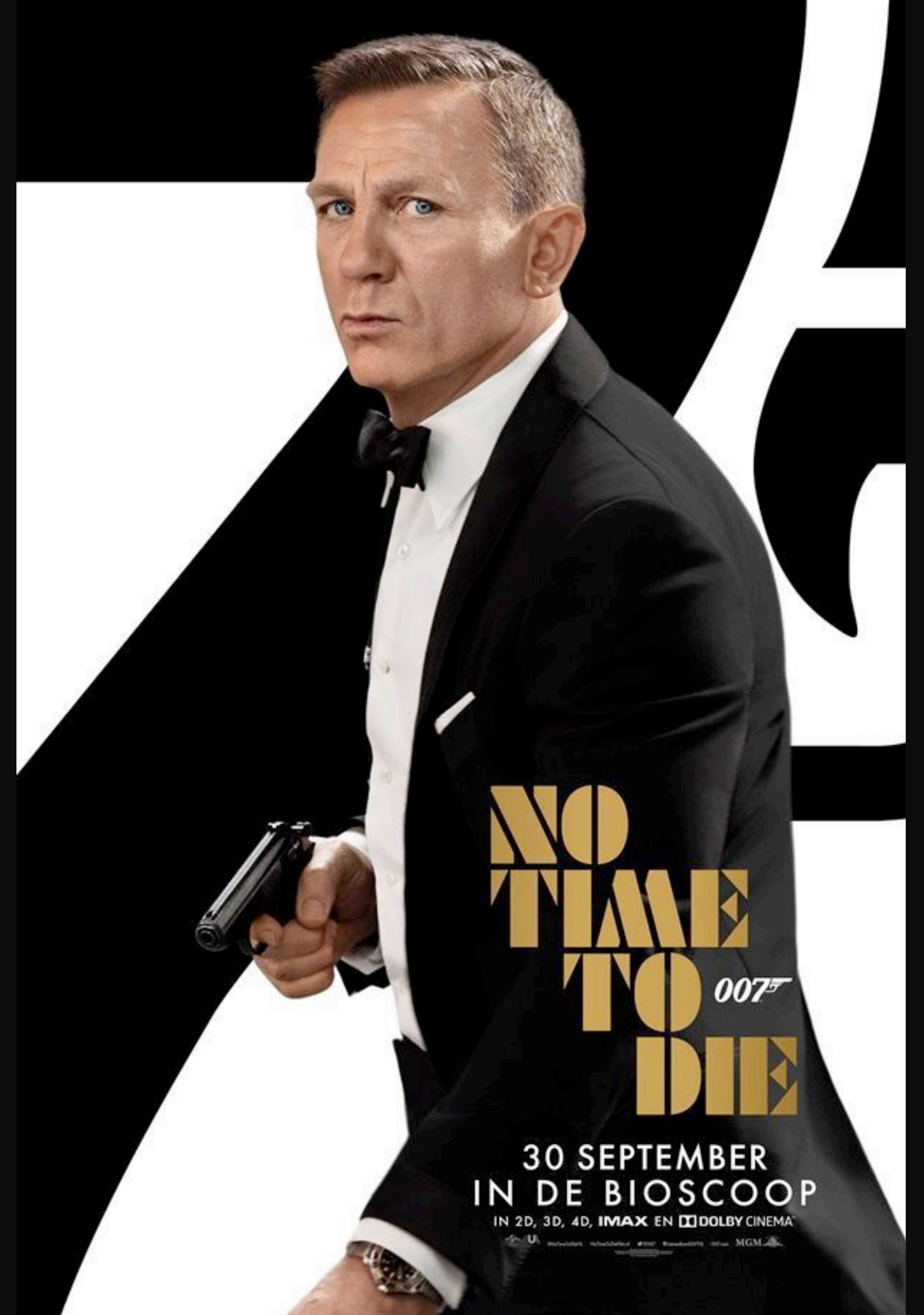




# Back ground information (1)

A cinema rents a movie from a distributor

- The rent is based on:
  - % Box Office (ticket price)
  - Play week
  - Admission numbers
  - Other contractual agreements
  - Changes are possible during screening windows
- Invoices are sent by:
  - Legal entity
  - Cinema
  - Version (Imax, 4DX, Dolby etc)
  - Playweek
  - Central organization Macsbox





## Back ground information (2)

- All required information for rental calculation is send to Maccsbox on a weekly basis
- Distributor calculates the film hire and generates invoices in Maccsbox
- Maccsbox provides (digital) invoices to the cinema's

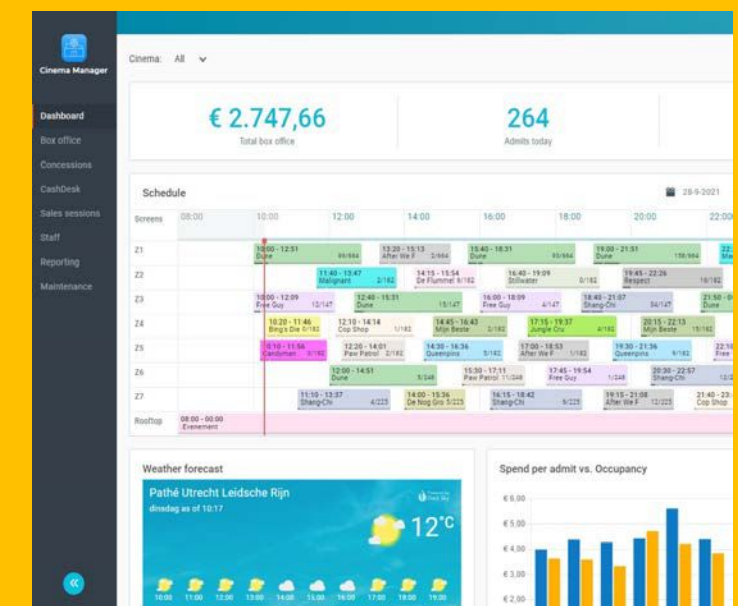
This resulted in  
66.000 invoices in  
2019

Expected invoices in  
the future >75.000



# Background information (3)

- During 2021 Pathé replaces their operational cinema software by Vista
- Current process of matching accruals with invoices is done in old cinema application (semi automated)
- Vista does not support the (digital) import and automated matching of invoices
- Due to the volumes and nature of transactions a fully automated process is required





# Designed solution

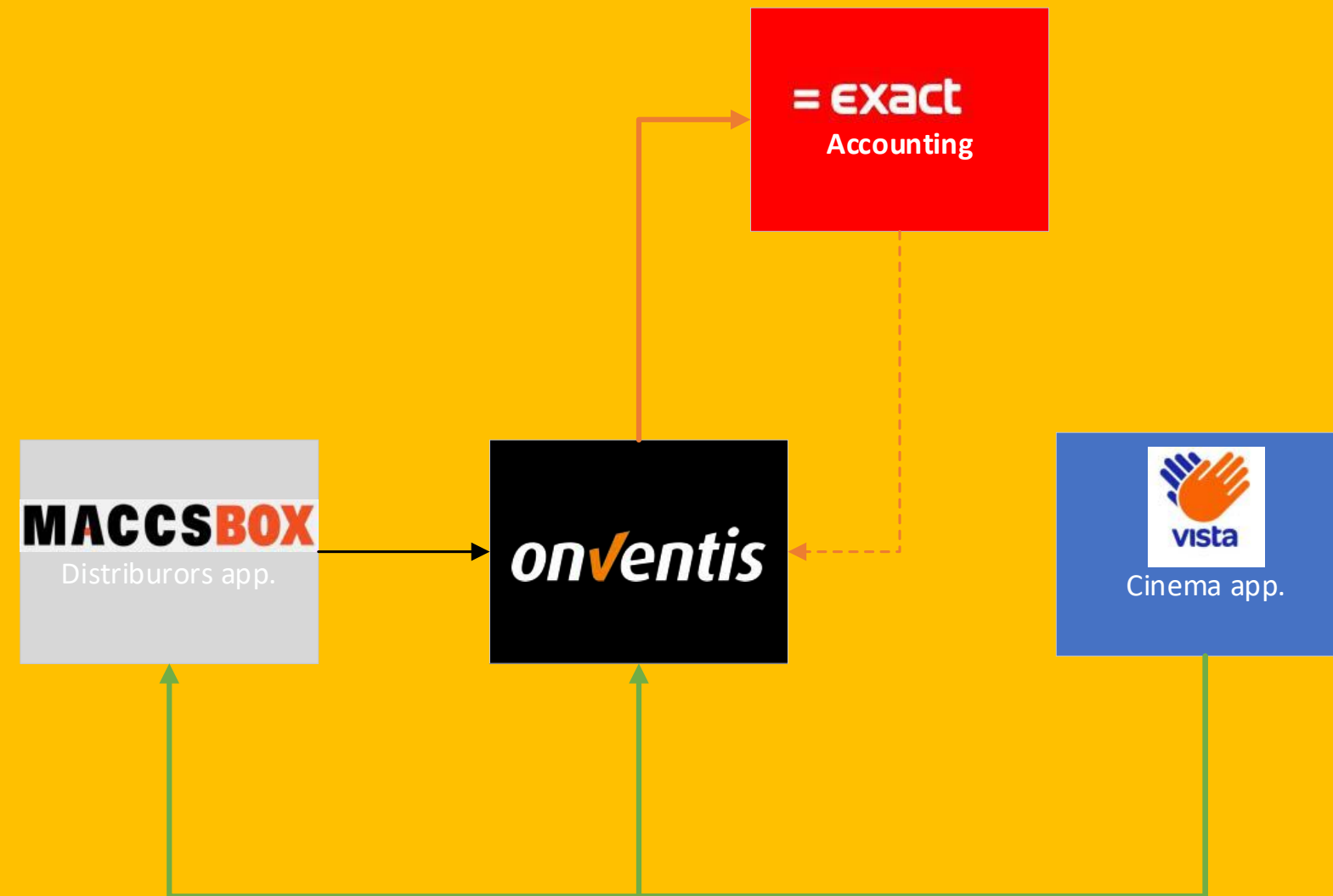
- Weekly export of (updated) calculated film hire expense from Vista to Onventis
- Onventis generates a (updated) purchase order (PO) based on the vista calculation
- Onventis creates (updated) accruals based on the PO for the accounting system
- Received invoices from Maccs are matched against the PO
- If agreed the PO will become an accounts payable entry and ready for payment send to the accounting system.
- Workflow for handling incorrect invoice outside of the tolerances

***onventis***





# Schematic application overview





## Results

- Solution is designed and created in our test environment
- Finalizing the interface between Vista and Onventis
- Reduce headcount on film hire process
- Focus on errors with the expectation to reduce failures







# Questions?



**LET'S**

